



THE LETTER

Summer

General Federation of Women's Clubs of Missouri, Inc.

August, 2011

"Carolyn's Corner" Federation Talk



with

Carolyn Lovelace

***GFWC of MO
President***

Summer greetings from Carolyn's Corner!

Maybe I should say hot summer greetings. Missouri has suffered almost every type of weather Mother Nature could throw our way. We started with hail, ice, record snow, continued on with flooding, tornados, more flooding and now the terrible heat. As I travel the state this fall, I will be anxious to see how everyone is faring.

One stop I will make as I travel to the District Fall Conventions will be Joplin, MO. As you know, GFWC of Missouri, Inc. is participating in the Adopt-A-Classroom project for the Joplin R-VIII School District. While in Seventh District, I plan to stop in Joplin to visit the teacher and classroom we have adopted. Our assigned teacher is Raye Frerer. Raye is a special education teacher who works with children in kindergarten through third grade. She often goes into the regular classroom to work with all of the children in those grades. Besides losing her schoolroom in the tornado, Raye and her family lost their family home. Raye shared the following picture showing what was left of her home. It is a miracle she and her husband managed to crawl from the rubble. If you would



like to donate to the Adopt-A-Classroom project, please look for the process in the article "Tornado Relief for Joplin" on the back cover of this edition of *The Letter*.

State Convention

We had a wonderful state convention in Jefferson City May 2-4, 2011! We gave many awards for the outstanding projects in which our clubs participated during the past year. We had 381 programs/projects reported, 14,010 volunteer hours reported, \$318,120.66 donated/raised and \$44,271.34 in In-Kind donations. Hooray for our GFWC of Missouri members.



One evening, we celebrated a 'Fifties Night' with car racing between the districts. Money collected during the evening went to the districts as well as GFWC of Missouri, Inc.

Another evening, we donned our western outfits and had a good old-fashioned hoedown with dancing and singing. If you receive the *GFWC Clubwoman Magazine*, check the section with pictures of the clubs. You will see GFWC of Missouri members "Line Dancing." You can see more pictures on our gfwcmo.org website.



GFWC International Convention

June 16-20, 2011 found nine GFWC of Missouri members and five spouses in Milwaukee attending the 120th GFWC International Convention. It is always good to see and visit with GFWC members from around the United States as well as other countries. Attending an International Convention truly gives one an opportunity to see the totality of GFWC and of the worthwhile projects of this great organization. GFWC members volunteered 5,252,763 hours, completed 135,958 projects, and donated nearly \$47,000,000 in money and In-Kind goods. Yes, GFWC has touched many lives and supported their

(President's Letter continued, Page 2)

(President's Letter continued)

communities in many ways. I hope you will join us next June in Charlotte, NC for the 121st International Convention.



Missouri President Carolyn Lovelace and President-elect Lisa Cook are ready to carry in the Missouri flag at the International Convention in Milwaukee.

Donna Calvin, Mississippi Valley Vice President; Marian St. Clair, GFWC Treasurer; Kathy Palermo, GFWC of Missouri Second District President and Carolyn Lovelace, GFWC of Missouri President at the International Convention in Milwaukee. Marion St. Clair will be attending the GFWC of Missouri Convention in May 2012.



Mississippi Valley Region Conference

I want to invite you to travel with us to Nebraska City, Nebraska for the Mississippi Valley Region Conference to be held October 7-9, 2011. This will be a great opportunity for you to join your fellow GFWC of Missouri members in great GFWC fellowship and to see what is happening in our region. There are seven states in the Mississippi Valley Region (MVR). They are Kansas, Nebraska, Iowa, Minnesota, South Dakota, and North Dakota and Missouri. Plan on attending and meeting these MVR ladies to see what is happening with GFWC in our neighboring states. Nebraska has interesting workshops and tours planned. You may find the registration form and additional information about the MVR conference and tours in this edition of *The Letter* on page 13.

I look forward to seeing you this fall!

Love in GFWC,

Carolyn

Membership



Lisa Cook

**GFWC of Missouri
President Elect**

As summer is well under way, how appropriate that the recruiting campaign slogan from GFWC is currently "Warm Up with New Members". Has it been hot outside or what?? We certainly should not have any trouble "warming up with new members" in this weather! The Summer season campaign is over at the end of August. Your recruitment report is due to GFWC on their Seasonal Recruitment Campaign Report form on September 1st. Don't forget if you recruited 3 members this summer, GFWC will publish your club's name in the GFWC Clubwoman Magazine. Also, please let me know the names of your new members so I can send them a welcome letter to GFWC of MO. I keep track of who recruited new members for our star pin awards given annually at the GFWC of MO State Convention.

When you host a membership drive for your club, give each prospective member a GFWC brochure, a GFWC of MO brochure, a Missouri Girls Town brochure, a handout or brochure about your own club, and a small inexpensive gift. For my clubs membership drive in August, I have purchased a note pad to be used for making your grocery list that is magnetic and hangs on the fridge. I will tie the brochures and handouts with the grocery list note pad with a ribbon to hand to prospective members. The note pads were \$1 a piece at Michaels so the cost of making these potential members feel welcome and informed need not be an issue. Make a display board about your club and brag a little on it. If you have GFWC apparel, wear it.

We all see that there is much work to do in our communities, in our state, and at Missouri Girls Town. We must re-energize our clubs with new members that bring fresh ideas. When clubs become complacent and stagnant, members lose interest. But when you add fresh ideas and new faces, the dynamic of the club can change for the better. Tired of the same old project, then dump it and find a new one that is more rewarding. Don't we all wish that Joplin had a GFWC club to assist with the rebuilding? We are, as a state organization, making an impact with the classroom we have adopted in one of their schools.

In September, the fall membership recruitment begins again with the slogan, "Rake in New Members". Start thinking of programs or projects you can use to rake in those new members.

I hope you have had success “warming up with new members” this summer. We are blessed in Missouri that our membership IS on the rise; in 2011 we reported more members than in 2010. Keep up the GREAT work.

The Elections are coming! The Elections are coming!

By Lisa Cook, GFWC of Missouri President Elect

During the Fall GFWC of Missouri District Conventions, I will be speaking briefly about the upcoming elections at the GFWC of MO State Convention in May 2012. We will be electing state officers, as well as Missouri Girls Town Board members. There will be six (6) Missouri Girls Town Board members up for re-election.

To run for a state office or a seat on the Missouri Girls Town board, you must do the following:

1. Ask for your club and/or district to endorse you as a candidate. Get an endorsement letter from your club and/or district. Your club secretary and/or district secretary should send your letter of endorsement to:

Pat Mertens, Chairman
 Committee on Elections,
 GFWC of MO
 1421 Lake Drive
 Ironton, MO 63650

THE LETTERS OF ENDORSEMENT ARE DUE TO PAT BY DECEMBER 15, 2011

2. After endorsement, the candidate herself writes a letter to Pat Mertens stating that she agrees to serve if elected. Address is above.
3. The candidate for office shall send a picture and a short bio to Karla Kincaid, Missouri Clubwoman Chairman by January 1, 2012. This will be printed in the Missouri Clubwoman newsletter.

The election will be held at the May GFWC of MO State Convention, May 2012.

Dues Increase, Timeline and More!



Dorothy Getz
*GFWC of Missouri
 Treasurer*

At May’s annual convention, two decisions were made that are of particular interest to club and district treasurers. First, GFWC of Missouri’s dues were increased from \$2.00 to \$5.00 -- the first increase in some twenty years. This

means that annual dues for members of general and junior clubs are now **\$20.00** -- rather than \$17.00 as in prior years. And, that the annual dues for members of juniorette club are now \$15.00 -- rather \$12.00 as in prior years.

Second, the funds for the Reading Awards Program (RAP) at Missouri Girls Town and Sophomore Pilgrimage were moved from the Fund for Charity and Education to the General Fund in order to protect the 501(c)(3) tax exempt status of the Fund for Charity and Education and to comply with its bylaws. In case you are wondering -- the Sophomore Pilgrimage Fund was established to defray some of the cost incurred by the clubs that actually organize the event.

An updated dues remittance form (i.e., pg. 13 of the reporting pages for 2011-2012) will be forwarded to all club presidents. It will reflect the increase in per capita dues and the addition of the funds for RAP and Sophomore Pilgrimage to the general fund. An updated Special Fund, Charity and Education Report Sheet (i.e., pg. 14 of the reporting pages for 2011-2010) reflecting the removal of the RAP and Sophomore Pilgrimage funds will also be forwarded to the club presidents. **Club Presidents** -- please give copies of the updated forms to your club treasurer!

Below is a **timeline** for club and district treasurers. Hope you find it helpful!

<u>Date</u>	<u>Club Treasurer</u>	<u>District Treasurer</u>
Oct. 31, 2011	Receive Special Fund worksheets	
Nov. 1, 2011	Postmark dues by this date for extra honor roll points	
Dec. 31, 2011	Postmark dues by this date to earn \$.35 dues rebate for District	
	Mail Special Fund Rpt. Sheet to District Treas. by this date -- at the latest	
Jan. 31, 2012		Mail Special Fund worksheets to State Treasurer

I have one more message for Club Treasurers: When club members make individual donations to Missouri Girls Town, encourage your members to enclose a copy of the Contribution to Missouri Girls Town form (i.e., pg. 15 in the (Treasurer’s Report continued, page 4)

(Treasurer's Report continued)

State Yearbook reporting pages for 2011-2012) with their donation -- or, just write a note asking that the club as well as the donor receive credit for their donation. Missouri Girls Town will give a donation credit to both the individual club member and your club.

Thanks for your help. All these efforts just make record keeping easier.

State Chairmen Updates:

EDUCATIONAL OPPORTUNITY!

Know a woman who could use money for education?

Apply for **Phoebe Jane Ess \$2500 Interest Free Loan**

For Missouri women who are high school graduates or have attained a GED

Your Club must endorse her and remain in touch until she pays off the loan.



Details: Contact - Linda Russell-Whitworth,
GFWC of MO Phoebe Jane Ess Loan
Fund Chairman,
5009 Glencairn Drive,
Columbia, MO 65203,
Phone: 573-449-0016

Global Smiles for Women and Children



Kathy Palermo

**International Outreach
Chairman**

There's nothing better than the smiles of our girls at Missouri Girls Town when we do something to make their days brighter. We can also make girls and women on the other side of the globe smile with the projects offered by our GFWC International Outreach Partners. For the past year, I've been the International Outreach Collaboration Chairman, so you sent your reports to me when you collaborated with other organizations in your town on a project. Since Janiece Hamilton moved, Carolyn Lovelace asked me to also be the Partnership Chairman. **Next January please send all your International Outreach reports to me, Kathy Palermo.** Here are some ideas:

- **Operation Smile** is in desperate need of No-No Armbands for children who have cleft-palate surgery. Because there is such a shortage of the armbands that keep the kids from scratching the incision, often the volunteer medical staff has to use tongue depressors taped on with surgical tape instead. If your club would like to make armbands, please call me at 816-373-6821 and I'll mail you a pattern. The GFWC Tuesday Study Club of Braymer just made armbands saying it's fun and a great way to use fabric scraps. Your club can also choose to donate \$240 to Operation Smile to pay for a life-changing surgery for a child in the U.S. or one of 60 developing countries.
- **Heifer International** tells us that 80% of the households in developing countries are run by women, but women only own 1% of the property. On your next club donation to Heifer, designate WILD on your check to buy livestock for women. WILD stands for Women in Livestock Development. I can send you a HEIFER Catalog or call Heifer at 1-888-548-6437.
- **INMED Partnerships for Children** rescues children in the U.S. and developing countries from irreversible harm. You can designate your contribution to address homelessness, maternal-child health, disease prevention, adaptive agriculture--all work together to build a brighter future for children living in desperate conditions. For \$50, your club can deworm five children in South America. Checks can be mailed to INMED Partnerships for Children, 20110 Ashbrook Place, Suite 260, Ashburn, VA 20147 or go to www.inmed.org and make a credit card contribution.
- **PLAN International USA** works in 48 of the poorest countries where it's taboo to be a girl. If you donate to the "Because I Am a Girl Campaign," your money will be used for girls' scholarships, girl-friendly latrines, girls hygiene kits, rescuing girls, keeping them safe from trafficking, and more. Send donations to Janet Trombetti, Plan USA, 155 Plan Way, Warwick, RI 02886.

I love this quote heard at the GFWC Convention in Milwaukee: *"What we do for ourselves dies with us. What we do for others lives on forever."*

Thank You

A Thank You - Beverly Shelton extends a big "thank you" for all the cards, prayers, and well wishes.

* * *

Beverly fell and broke her hip. At last report, she is progressing nicely.

Missouri Leadership Seminar



Beverly Shelton

***Missouri
Leadership Chairman***

The 2011 Missouri Leadership Seminar is history and another group of sophomore students have experienced the realization that they are our future leaders.

As you plan you budget for the coming club year, please consider donating to the Seminar. The cost per student is \$300. Any amount you can budget is appreciated. Or, maybe you can ask another organization in your community to help with finances to send a sophomore from your school district.

Please send your checks to Beverly Shelton in order to receive a certificate at State Convention in May. Her address is 4424 Huntington Way, Independence, MO 64055 or call for more information at 816-373-0573.

Be sure to check with your school counselor this winter to see if your school has a student registered to attend the Seminar in June, 2012.

Ice Cream Social Honors Missouri Girls Town Readers



Hallie Yundt Silver

***Reading Awards
Program
Chairman***

The tenth ceremony of the Reading Awards Program (RAP) was held at Missouri Girls Town on July 19th. There was cause for celebration. Fifteen girls read and reported on 103 books in the last seven months. Three were pledges, and six were new members. The other six girls are readers, having joined and participated in RAP earlier. One has read 73 books so far and hopes to get her fourth Century certificate next November.

Loosely based on the objectives of GFWC/ESO, RAP provides each student with a growing interest in her continued education through reading. Girls are encouraged to read and submit book reports to their

teachers through a series of awards. Pledges become Members after reading four books. After reading five additional books, girls receive their Star Certificate. Torch-level readers have read a total of fourteen books. After reading twenty books, girls earn their Century-level award. Each girl receiving an award gets a special certificate, a handshake, and her personal selection from the prize table. Star and Torch recipients also get a special pencil. Century Certificate earners receive a special pen or bookmark and a \$25 Wal-Mart gift certificate.

RAP is successful. Since it began in 2007, 155 girls have read and written reports on 1,036 books.

RAP is strengthened by the enthusiasm from members of the GFWC of Missouri. Clubwomen from around the State attend the RAP awards ceremonies. GFWC of Missouri and local clubs provide monetary contributions and \$5 to \$25 Wal-Mart gift certificates. Local clubs and individual members also donate the kind of little prizes teenage girls love to own, including: art supplies, make-up (no aerosols, please), hand and body lotion, hard-bound journals and pen sets, jewelry, craft kits, paperback books, fashion magazines, fun socks, etc.

Pat Etienne, (Columbia), Karla Kincaid (Braymer), Ann Kutscher (Jefferson City), Carolyn Lovelace (Lathrop), and Hallie Yundt Silver (Hannibal) were at Girls Town on July 19th. We tried something a little different since there is more time in the summer. Instead of the usual pizza party, RAP hosted an ice cream social. We also played games along the line of the TV show, *Minute to Win It*®. The girls and a number of the adults in attendance divided into four teams. Each participant played one of the games. These ranged from "Breakfast Scramble" (reassembling a cereal box cut into sixteen pieces) to "Egg Tower" (standing up a tower of four paper towel tubes held together with plastic eggs). Everyone got a prize and had lots of fun, too



This "Minute to Win It" Girls Town participant is trying to get a cookie from her forehead to her mouth without dropping the cookie. You'll notice the cookie is over her right eye. This game required a lot of twisting and turning of the facial muscles.

The next celebration of the girls' reading success is on Tuesday, November 15th, and RAP participants are certain to have lots of success to celebrate. If you can attend, please, please come and cheer for these wonderful girls.

The author of this article, RAP Chair Hallie Yundt Silver, is a member of the GFWC Woman's Club of Hannibal and is the Director of the Hannibal Free Public Library. Questions about the program may be directed to her at hallieys@hannibal.lib.mo.us or by calling 573-221-0222 during normal business hours.

Changes in Yearbook

Please make the following changes in your state yearbook to make sure all correspondence arrives at the correct address.

Page 7 and Page 16: GFWC of MO Parliamentarian and Page 9: Missouri Girls Town Board Member Jean Marney's email is: twojams@hotmail.com

Page 19: GFWC of MO Music Chairman Sue Harris' new address is: 2412 Timbercreek Drive, Plano, TX 75075

Page 25: New President for Braymer GFWC Tuesday Study Club: Barbara Still 14100 SE State Route KK, Braymer, 64624 - Phone: 660-645-2519 - barbstill@centurylink.net

Page 26: New President for Cainsville GFWC Twentieth Century Club: Louise Kellner, 17284 E 345th Street, Cainsville 64632 --- Phone: 660-893-5652

Page 31: Fourth District Recording Secretary Linda Russell-Whitworth's email is: lrussell777@gmail.com

Page 32: New President for GFWC Columbia Women's Club: Viola Powell, 4801 Garden Grove Drive, Columbia 65203 - Phone 573-445-1661

Page 37: Bolivar GFWC Genesis Club President Jennifer Carr's email is: jennfocarr@hotmail.com

Page 38: Seventh District First Vice President and GFWC Cassville Silver Leaf Benefit Club President Tracie Snodgrass' email is: mtnmaid@hughes.net

Page 38: Seventh District Parliamentarian Jean Marney's email is: twojams@hotmail.com

Page 39: New President for Nevada GFWC Thalias Club: Angie Landoll, 14863 E Redcoat Road, Nevada 64772 - Phone: 417-667-2061 - glandoll@nevada.k12.mo.us

Page 39: Shelly Barger, president of El Dorado Springs GFWC Generation III Club, address is 4035 E Hwy U, El Dorado Springs 64744 - 417-876-1819 - bargershelly@hotmail.com

Page 40: GFWC Crestwood Women's Club President Karen Sharp's email is: karendkelly@juno.com

Past State President Barbara Popp's address is 2560 Terrace Park Place, Jackson 63755-861 - Phone: 573-243-2560 - email: john.barbpopp@att.net

GFWC of Missouri Calendar

October 1 - Missouri Girls Town Open House

October 7-9 - Mississippi Valley Region Conference, Nebraska City, Nebraska (see page 13)

October 19 - Missouri Day

November 15 - Reading Awards Program (RAP) at Missouri Girls Town - Contact Hallie Yundt Silver is you plan to attend (see page 5)

DEADLINE FOR NEXT *Missouri Clubwoman* October 28, 2011

Please send articles to President Carolyn Lovelace for editing. They will be forwarded to the Missouri Clubwoman Chairman, Karla Kincaid, for publication.

"Read to Win" Winners

Beverly Shelton from 2nd District and Pat Mertens from 9th District will receive free registration to the 2012 Summer Convention at the Capital Plaza Hotel in Jefferson City next May. They were the first to find the letters "agf" in the last edition of the *Missouri Clubwoman*. The symbol stands for attitude, gratitude and fortitude as in President Carolyn's theme: **"Building and Celebrating with Attitude, Gratitude and Fortitude."** Be one of the first two members to find the symbol in the next edition of the *Missouri Clubwoman* and you too can win a free registration.



When Pat Breckenridge (on right) recently became a member of GFWC, her sponsor was Enid Barnes (on left). What a great idea to have a sponsor or mentor for new members!



Thank you GFWC friends for your many prayers and cards during Paul's recent illness and death. It was most appreciated and comforting to know that friends like you were thinking of us during this time of loss. Words can never express how grateful to all of you and to the clubs that not only sent cards but also to those who made donations in Paul's memory to either Missouri Girls Town or to our church building fund. I am truly touched by your thoughtfulness, lifted by your kindness, and renewed by your goodness. It is comforting to be supported by so many GFWC friends and we thank you for your thoughtfulness during a very difficult time. Thanks to all of you.

Fern Nevatt

Measures of Success at Missouri Girls Town

By Kathy Becker, Executive Director



MISSOURI
GIRLS
TOWN

Where caring counts

As we end another fiscal year, I wanted to say without reservation, based on my 25 years experience in working for tax-exempt organizations, Missouri Girls Town is truly a five out of five non-profit.* That being said, the most important responsibility I have is to ensure that we are accountable to our clients, donors, tax payers, our staff, and our volunteers.

So the next question is, "how do we measure success? In addition, how can we assure those who support Girls Town through their generous support that we are doing the very best job possible? In my opinion there are several ways to measure success. The biggest one is in regards to the number of successful discharges from Girl Town. How many clients have been admitted to Missouri Girls Town and have successfully been discharged from our program. Girls Town views a successful discharge as one in which a client leaves and goes into a less restrictive environment. This past year the percentage of successful discharges was 67%. We are currently working diligently to improve this number, but we also understand that when a client arrives at Girls Town some are not willing or ready to work our program.

One of the next ways to measure the success of an organization is to figure how much money can be directly attributed to the care and services of the clients and how much of the organization's budget is attributed to administration. This is a number that I personally am very proud of because it tells everyone involved that we are an organization that focuses on client care. According to a recent report that was prepared for the Missouri Department of Social Services, the total administrative cost including a percentage of maintenance, depreciation, insurance, etc. equaled 11% of our Girls Town's total expenses. According to organizations that rate non-profits, like Charity Navigator, the rule of thumb is that a charity should spend no more than 25% on administrative cost. As you can see, Missouri Girls Town administrative cost is well below the accepted level. In other words, as Executive Director, I can say that due to the excellent oversight from the Board of Directors, Girls Town does an excellent job of assuring to our clients, donors, tax payers, direct care staff, and volunteers that Girls Town is truly a client-focused organization. I also can say that we are fulfilling our mission by being an organization that is dedicated to helping young woman gain a new start in life.

P.S. Missouri Girls Town was just awarded 50% Missouri state tax credits for all gifts above \$100.00. This basically means that if an individual or business gives \$100 or more and request to receive tax credit that they will receive 50%

of their gift back as a tax credit when they file their state taxes. This tax credit is in addition to the normal state and federal tax deduction they will receive for making a gift. For more information, please contact me at 573-642-5345. Also remember to note your club when you are making a gift so GFWC will be recognized.

* As shown on Guidestar.com

Note from Pat Zachary, GFWC of Missouri Girls Town Chairman

The Feinstein Foundation has published the 2011 Award in the Feinstein Foundation Challenge to feed the hungry in America.

In Missouri, the smallest award was \$100, the largest, \$2,963.71.

MISSOURI GIRLS TOWN HAS BEEN AWARDED \$315.23.

You will find all the awards listed on the feinsteinfoundation.org website. GFWC of Missouri and Missouri Girls Town raised \$21,153.44 in response to the Feinstein Foundation Challenge.

Missouri Girls Town \$50/Year Club

A special thank you goes out to all GFWC members who have joined the \$50/Year Club since January 1, 2011. Through their efforts, a total of \$1450.00 has been raised to date for Missouri Girls Town. Thank you to:

Michael and Janis Anderton	Karla Kincaid
H.F. and Evelyn Bell (2)	Roy and Bernice Lilley
Corby and Donna Calvin	Carolyn Lovelace
George and Ruth Clemens	Lunch Bunch
Mildred A. Cooke	Fern Nevatt
Sue Dance	Joe and Kathy Palermo
Carolyn Dye	Tom and Regina Reed
Linda Fischer	Willard and Lois Reine
Sue Foley	Eileen Sapp
GFWC Elvarea Fickle MGT Club	Carol Shoener
GFWC Fifth District, Inc	Mary Skinner
Conway and Alice Goehman	Lola Belle Underwood
Cheryl Ingraham	Joe and Pat Zachary
Dolores M. Kavanaugh	

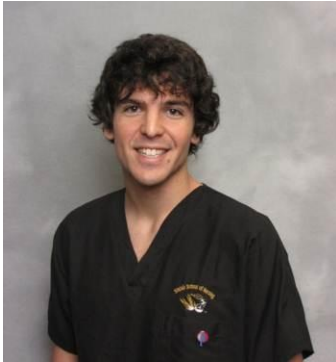
Angels Among Us

How many angels can you fit on the head of a pin? No one can answer that question. However, one can answer the question as to how many angels are in GFWC of Missouri. Just look around and you will find an angel working everywhere for her state, her club and her community. – **by Shirley Napoli**

(Due to limited space, "Angels" can not be featured in this issue)

GFWC of MISSOURI Announces 2011 Scholarship Recipients

The Johnson/Calvin Mental Health Nursing Scholarship



Matthew Miller is originally from Wilmington, NC but now lives in Columbia, MO. He is a 6th semester undergraduate student, and will be a senior in the fall. He currently has a cumulative GPA of 3.775, but a 4.0 in all his coursework in nursing. His long term goal is to be a registered nurse at a psychiatric hospital; but his short term goal is to continue his education with a graduate degree in mental health nursing. He has been on the Dean's List all of his semesters at MU. This past summer he completed a public health internship in Ghana, where he tested patients for HIV and counseled them in a public maternity clinic. Matt desires to help those impaired by mental health issues and chooses to dedicate his life to assisting others.

The McDonough Law Scholarship



Ashley Cross and her husband are both in law school as first year

students and Ashley is doing AMAZING! Ashley grew up in Monett, Missouri—a small, rural town in Southwest Missouri and attended Missouri State University where she majored in English Literature and minored in Political Science. During her time at Missouri State University, she was involved in student government and sat on the University's Board of Governors as the student governor. She volunteered for two years as the assistant debate coach for Parkview High School in Springfield, Missouri, and coached the 4th place team in the nation in 2010. At the University of Missouri, Columbia Ashley is active in the Women's Law Association, the Student Animal Legal Defense Fund, the Ambassador program and the Board of Advocates. In her spare time, she enjoys baking, travelling, and taking her dogs to the dog park!

Ozarks Technical Community College Native American The Helen Steinkule Memorial Scholarship



Shane Fowler is seeking an Associate of Arts transfer degree with an emphasis in sociology. Shane plans to transfer to Missouri State University in order to complete a Bachelor's degree in sociology. He hopes to pursue a career in teaching and to achieve a Doctoral degree in the future. Shane currently holds a 2.45 GPA and participates wholeheartedly in community service activities, which include volunteering at a Senior Center and working with organizations which help homeless persons. Shane is a registered member of the Navajo Indian Tribe

and feels a strong connection to his heritage. He appreciates storytelling from family members who were raised on the Reservation, and he works hard to maintain an uplifted family spirit in spite of the financial hardships they have experienced recently. He genuinely appreciates your generous scholarship.

UMKC Conservatory of Music The Shelton/Snavely Music Therapy Scholarship



Brittany Slaughter was born and raised in St. Charles, MO. She attended Francis Howell High School where she enjoyed being an active student in the music and theater programs. Brittany started playing piano at the age of 8 and began composing music at the age of 10. She released her first CD and wrote her first full orchestra piece at the age of 14. Brittany received the Claude T. Smith award and scholarship for her orchestral composition, "Silver," in 2007 and it was performed by the Missouri State University orchestra. When Brittany wasn't composing, she worked part time at St. Luke's Surrey Place, a skilled nursing facility in Chesterfield, MO; Brittany worked as a receptionist and in the activities department at Surrey Place for five years. She was awarded the St. Luke's F.A.C.E.S. Award in 2009 for being friendly, available, caring, efficient and safe. She loved interacting with patients so much, she was inspired to seek a career within the therapeutic field. Brittany currently enjoys being a student at the University of Missouri-Kansas City Conservatory

of Music and Dance, pursuing her bachelor's degrees in Music Composition and Music Therapy. Throughout her years at UMCK, Brittany has grown an interest in music therapy research and film score. She hopes to work as a film composer and as a clinical therapist in a hospital setting while researching the effects of music therapy and cancer survivor support groups. Brittany is a highly motivated individual who enjoys helping others, composing music, meeting new people and attending Cardinals' baseball games.

The Bartley/Dance/Nevatt Music Scholarship



Abby Rehard is currently working towards earning her Bachelor of Music degree in Percussion Performance at the University of Missouri -Columbia. She was very active in the musical scene while growing up in her hometown of Macon, Missouri, by taking lessons on piano and marimba, playing for the local theater productions, and performing in music festivals. Her future plans include traveling abroad to study steel pans in Trinidad and Portuguese in Brazil. Abby has a cumulative GPA of 4.0.

The Cooper/Tarr Art Scholarship

Anna Marten lives with her family in Independence, MO while attending the Kansas City Art Institute. This summer she will be entering the illustration program there. Anna has gained an appreciation of handicrafts this past year and hopes to put an accumulation of packrat



Anna Martin

materials to good use in some tramp art inspired pieces. Silk screen printing will also play an important part in her summer art exploration. Anna is most interested in the narratives between people and their art, both public and personal. I look forward to school next fall after spending some time swimming, reading and writing.

The Ezell/Zachary Forestry Scholarship



Ashley Schulz will be a senior at the University of Missouri, Columbia. She is very involved in several clubs at the School of Natural Resources at MU including her presidency of the Student Council and memberships in Forestry Club, Student Ambassadors and Peer Mentors. She has been the teaching assistant for the freshmen learning strategies courses for the past two years. She is from Silex, MO.

The Gepford/Walker Special Education Scholarship

Amelia Noble is a senior special education major from St. Charles, Missouri. She will receive a Bachelor of Education degree in

Special Education, May 2012, with minor in Psychology. She has a 3.0 GPA. Amelia is a member of Little Sisters of the Golden Rose. In this organization she has volunteered at the Columbia food bank, the Special



Amelia Noble

Olympics and the Humane Society. She has volunteered at the alternative community training center in Columbia where adults who have special needs go and continue practicing their community skills. She has also volunteered at CSME giving gardens; this is a nursery that provides jobs for adults who have been diagnosed with disabilities. Amelia has enjoyed working with children in a number of Columbia Public Schools.

GFWC of Missouri 2010 Awards

ARTS

Art Collaboration

- 1st GFWC Alton Culture Club
- 2nd GFWC Ste. Genevieve Woman's Club
- 3rd GFWC Silver Leaf Benefit, Cassville

Art Partnership

- 1st GFWC Sorosis Club of Springfield

Photography Contest

Volunteers in Action Contest

- 1st **Karole Jacobsen**, Parkville, "Women's Work"
- 2nd **Kathy Palermo**, Lee's Summit, "The Moms and Kids at Hope House Will Love These Gifts"
- 3rd **Karole Jacobsen**, Parkville "Books for Kids"

Photography Contest – Feature

- 1st **Carolyn Bach**, Ste. Genevieve, "Uncle Tom's Tractor Ride"
- 2nd **Tracie Snodgrass**, Cassville, "Sharing Can Be a Bit Scary"
- 3rd **Susan Gettys**, Saint Robert, "Mischievous Eyes"

Photography Contest – Natural History

Natural History Photography 1st place by Deborah A. Howard of Columbia with "Gorgeous Gourds"

- 2nd **Judy Wertz**, Hickman Mills, "The Blue Morpho"
 3rd **Sue Nevatt**, Saint Robert, "Table for Two"

Photography Contest – Scenic

- 1st **Joy Little**, Marshall, "Umbrella, Anyone?" 1
 2nd **Kathy Palermo**, Independence, "A Summer Solace"
 3rd **Karole Jacobsen**, Parkville, "Sunset @ Fort Myers, FL"

Writing Contest – Short Story

- 1st **Bobbi Dickerson**, Lathrop "My Two Chocolate Ghosts"
 2nd **Pauline Cooper**, St. James "God's Plan"
 3rd **Carol Shoener**, Braymer "Going Home"

Writing Contest – Poetry

- 1st **Ramonna Kanne**, Parkville "Chasing Waves"
 2nd **Carol Shoener**, Braymer "My Earthly Father"
 3rd **Pat Mertens**, Ironton "Who Puts the 'W' in GFWC?"

Youth Short Story Contest

- 1st - category 2 **Gabbie Caruthers**, Alton "The Twin Pixie Princesses"
 2nd - category 2 **Samuel Marquez**, Lathrop, "Giving"
 3rd - category 2 **Jennifer Valasquez**, Lathrop, "Making My Community a Better Place"

Youth Poetry Contest

- 1st - category 1 **Garrett Washington**,

- Lee's Summit, "Feelings"
 1st - category 2 **Damon King**, Lee's Summit, "I Am"
 2nd - category 2 **Erika Hall**, Lee's Summit, "Still"
 3rd - category 2 **Orban Reed**, Lee's Summit, "My Life at Ten"
 1st - category 3 **LeRoy Walters**, Lee's Summit, "Sear"
 2nd - category 3 **June Brooks**, Lee's Summit, "Grandpa"
 3rd - category 3 **Paige Burns**, "The World Could Use My Humor"

CONSERVATION**Conservation Collaboration**

- 1st GFWC Silver Leaf Benefit, Cassville
 1st GFWC Alton Culture Club
 2nd GFWC Studere Club, Wellsville
 3rd GFWC Crestwood Woman's Club

EDUCATION**Education Collaboration**

- 1st GFWC Achieving by Reading Club - Lee's Summit
 2nd GFWC Diana's Club, Jefferson City
 3rd GFWC Lathrop Study Club

Scholarships

- 1st GFWC Ste. Genevieve Woman's Club
 2nd GFWC Better Homes Club - Butler
 3rd GFWC Patrician Club - Parkville

Education in the Community/ESO

- 1st GFWC Achieving by Reading Club, Lee's Summit
 2nd GFWC Dianas Club, Jefferson City
 3rd GFWC Lathrop Study Club

Lois Homan ESO Award

Jan Anderton, Wellsville

ESO Century Awards

- 1st Century
 Linda Estill
 Jean Marney
 Carol Shoener
2nd Century
 Mildred Cooke
 Sue Scherer
 Maxine Watkins
3rd Century
 Cheryl Ingraham
1st, 2nd and 3rd Centuries
 Jan Anderton
4th Century
 Martha Engle
4th and 5th Centuries
 Carol Duke
Millennium Award
 Lola Belle Underwood
11th Century
Betty Dance
14th Century
 Patricia Zachary
16th Century
 Carolyn Wyatt

HOME LIFE**Home Life Collaboration**

- 1st GFWC Nu Era Study Club - Independence
 2nd GFWC Golden Study Club, Fayette
 3rd GFWC Crestwood Woman's Club

INTERNATIONAL OUTREACH International Collaboration Program

- 1st GFWC Tuesday Club of Columbia
 2nd GFWC Mexico Women's Club
 3rd GFWC Braymer Tuesday Study Club
International Collaboration Project
 1st GFWC Sorosis Club of Springfield

International Partnership Program

GFWC Art & Literature Club, Parkville

International Partnership Project

- 1st GFWC Studere Club, Wellsville
 2nd GFWC Achieving by Reading Club, Lee's Summit
 3rd GFWC Ste. Genevieve Woman's Club

PRISM

- 1st GFWC Golden Study Club, Fayette

PUBLIC ISSUES**Public Issue Collaboration**

- 1st GFWC Dianas Club, Jefferson City
 2nd GFWC Nu-Era Study Club, Independence
 3rd Lathrop Study Club

Public Issues Partnership

- 1st GFWC Sorosis Club of Springfield

COMMUNICATIONS & IDENTITY

- 1st GFWC Nu-Era Study Club, Independence
 2nd GFWC Ste. Genevieve Woman's Club
 3rd GFWC Mexico Women's Club

FUNDRAISING

- 1st GFWC West County Women's Club, St. Louis
 2nd GFWC Kansas City Athenaeum
 3rd GFWC Mina Sauk Club, Ironton

MISSOURI LEADERSHIP SEMINAR**Certificates of Appreciation****FIRST DISTRICT**

- GFWC Chillicothe Culture Club
 GFWC Tuesday Study Club, Braymer

SECOND DISTRICT

- GFWC Nu Era Study Club, Independence
 GFWC Woman's Club of Lexington

FOURTH DISTRICT

- GFWC Tuesday Club, Columbia

FIFTH DISTRICT

- GFWC Golden Study Club, Fayette

SIXTH DISTRICT

- GFWC Sorosis Club of Springfield

NINTH DISTRICT

- GFWC Ste. Genevieve Woman's Club

LEADERSHIP

- 1st GFWC Tuesday Club of Columbia
 2nd GFWC Mexico Women's Club
 3rd GFWC Braymer Tuesday Study Club

MEMBERSHIP

1st GFWC Women's Club of Lexington
 2nd GFWC Studere Club, Wellsville
 3rd GFWC Chillicothe Culture Club

Betty Bradley Award for largest membership increase in a General Club
 GFWC Women's Club of Lexington - 14 new members

Ann Kutscher Award for largest membership increase in a Junior Club
 GFWC Rolla Junior Club – 2 new members

Golden Spoon Award for outstanding membership program
 Pat Mertens, ninth district membership chairman

Clubs celebrating milestone anniversaries:

GFWC Springfield Ladies Saturday Club, 115 years
 GFWC Kansas City Athenaeum, 115 years
 GFWC Monday Club of Farmington, 110 years
 GFWC Fortnightly Club of Farmington, 100 years
 GFWC Past Presidents Club, 50 years

White Star: Award for members who have recruited 5 to 9 new members

District 2
 Linda Estill, GFWC Women's Club of Lexington
 Shirley Guevel, GFWC Women's Club of Lexington
 Sue Harris, GFWC Beverly Shelton Girls Town Club, Independence
District 6
 Sally Robbins, GFWC Alton Culture Club
District 7
 Janice Carter, GFWC Generation III, El Dorado Springs
District 9
 Mary Ann Otto, GFWC Ste. Genevieve Women's Club
 Judy Gustafson, GFWC Ste. Genevieve Women's Club

Red Star: Awarded to members who have recruited 10 to 14 new members

District 1
 Carol Shoener, GFWC Tuesday Study Club of Braymer
District 2
 Shirley Guevel, GFWC Women's Club of Lexington
District 6
 Pat Zachary, GFWC Sorosis Club of Springfield
 Daisy Simmons, GFWC Alton Culture Club
District 7
 Jean Marney, GFWC Silver Leaf Benefit Club of Cassville

Blue Star: Awarded to members who have recruited 15 to 19 new members

District 2
 Trish Shelton, GFWC Achieving by Reading Club, Lee's Summit
District 4
 Joyce Hulett, GFWC Tuesday Club of Columbia

GFWC of MO Gold Certificates for clubs who increased membership

FIRST DISTRICT
 GFWC Tuesday Study Club of Braymer
 GFWC Chillicothe Culture Club
 GFWC Lathrop Study Club
SECOND DISTRICT
 GFWC Questers Club of Grandview
 GFWC Beverly Shelton Girls Town Club, Independence
 GFWC Elvarea Fickle Girls Town Club – Kansas City
 GFWC Achieving by Reading Club of Lee's Summit
 GFWC Women's Club of Lexington
 GFWC Platte City Study Club
THIRD DISTRICT
 GFWC Woman's Club of Shelbyville
FOURTH DISTRICT
 GFWC Sorosis Club of Centralia
 GFWC Chautauqua Club of Clarksville
 GFWC Tuesday Club of Columbia
 GFWC Calloway Juniorette Club at Missouri Girls Town, Kingdom City
FIFTH DISTRICT
 GFWC Junior Achievers Club, Appleton City
 GFWC California Women's Club
 GFWC Evening Euterpean Club of Elton
 GFWC Golden Study Club of Fayette
 GFWC Capital City Woman's Club of Jefferson City
 GFWC Coterie Club of Marshall
SIXTH DISTRICT
 GFWC Cabool Girls Town Study Club
 GFWC Fidelis Club of Springfield
 GFWC Sorosis Club of Springfield
 GFWC Crescite Club of Thayer
 GFWC Rolla Junior Club
 GFWC Alton Juniorette Club
SEVENTH DISTRICT
 GFWC Silver Leaf Benefit Club, Cassville
 GFWC Generation III, El Dorado Springs
 GFWC Progress Club, El Dorado Springs
 GFWC Laurels Club of Nevada
EIGHTH DISTRICT
 GFWC Crestwood Women's Club
 GFWC West County Women's Club of St. Louis
NINTH DISTRICT
 GFWC Scope Club of Cape Girardeau
 GFWC Monday Club of Farmington
 GFWC Quest Club of Fredericktown
 GFWC Woman's Community Club of Gideon
 GFWC Mina Sauk Club of Ironton
 GFWC Adelphian Civic Club of Kennett
 GFWC Marble Hill Women's Club

GFWC Marble Hill Study Club
 GFWC Ste. Genevieve Woman's Club
 GFWC Senath Federated women's Club

GFWC of MO Silver Certificates for clubs retaining membership

FIRST DISTRICT
 GFWC Tri-Arts Girls Town Club of Cameron
 GFWC Modern Study Club of Plattsburg
SECOND DISTRICT
 GFWC Concordia Forum Club
 GFWC Fortnightly Study Club of Liberty
 GFWC Heart of America Girls Town Club of Raytown
THIRD DISTRICT
 GFWC Woman's Club of Oakwood
 GFWC We Moderns Club of Lewistown
 GFWC Lydian Club of Macon
FOURTH DISTRICT
 GFWC Heir Study Club of Bowling Green
 GFWC Aeolian Club of Eolia
FIFTH DISTRICT
 GFWC Better Homes Club of Butler
 GFWC Lorna Kemper Club of Clinton
 GFWC Keystone Club of Windsor
SIXTH DISTRICT
 GFWC Fidelis Club of Bolivar
 GFWC Bolivar Twenty Club
 GFWC Springfield Ladies Saturday Club
 GFWC Progressive Study Club of West Plains
NINTH DISTRICT
 GFWC Federated Women's Club of Farmington
 GFWC Hayti Women's Club

Districts That Increased Membership

District 1 - 1
 District 3 – 1
 District 5 – 18
 District 7 - 6
 District 9 – 14

ADVOCATES FOR CHILDREN (Juniors Special Project)

1st GFWC Callaway Junior Club, Kingdom City
 1st GFWC Tuesday Club of Columbia
 2nd GFWC Crescite Club, Thayer
 3rd GFWC Beverly Shelton Girls Town Club, Independence

GFWC SIGNATURE PROJECT: DOMESTIC VIOLENCE

1st GFWC Ste. Genevieve Women's Club
 2nd GFWC Nu-Era Study Club, Independence
 3rd GFWC Tuesday Club of Columbia

FEDERATION EMPHASIS

1st Ste. Genevieve Woman's Club
 2nd GFWC Nu-Era Study Club, Independence
 3rd GFWC Lydian Club, Macon
 3rd GFWC Patrician Club of Parkville

MISSOURI DAY PROMOTION

1st GFWC Silver Leaf Benefit, Cassville
 2nd GFWC Chautauqua Club, Clarksville
 3rd GFWC Studere Club, Wellsville

Shirley Cooper Award:

club contributing the most per capita to the Missouri Clubwoman in 2010

GFWC Thursday Culture Club, Puxico

Honor Roll: Early Bird Award

GFWC Aeolian Club, Eolia

Honor Roll High-Point Club

1st GFWC Kansas City Athenaeum Club
 3,427,937 points

2nd GFWC Sorosis Club of Springfield
 2,101,450 points

3rd GFWC Beverly Shelton Girls Town Club, Independence – 984,792 points

2010 Honor Roll Report**Five Year Increment Clubs****FIRST DISTRICT**

GFWC XIX Club of Chillicothe (60)

GFWC 20th Century Club, Cainsville (60)

GFWC 20th Century Club, Bethany (50)

SECOND DISTRICT

GFWC Grandview Study Club (55)

GFWC Nu-Era Study Club, Independence (50)

GFWC Elvarea Fickle Girls Town Club, Kansas City (25)

FOURTH DISTRICT

GFWC Studere Club of Wellsville (55)

GFWC Chautauqua Club, Clarksville (30)

FIFTH DISTRICT

GFWC Keystone Club of Windsor (40)

SIXTH DISTRICT

GFWC Alton Culture Club (30)

NINTH DISTRICT

GFWC Monday Club, Farmington (60)

GFWC Marble Hill Women's Club (55)

MISSOURI GIRLS TOWN**Virginia Oliver Award**

GFWC Sorosis Club of Springfield

Trophy for Outstanding Girls Town Project in the State

GFWC Women's Service League of Carthage

District Outstanding Project**1st Place Awards****FIRST DISTRICT**

GFWC Tuesday Study Club, Braymer

SECOND DISTRICT

GFWC Beverly Shelton Girls Town Club, Independence

THIRD DISTRICT

GFWC Women's Club of Oakwood, Hannibal

FOURTH DISTRICT

GFWC Mexico Women's Club

FIFTH DISTRICT – No Entries

SIXTH DISTRICT

GFWC Alton Culture Club

SEVENTH DISTRICT

GFWC Women's Service League, Carthage

EIGHTH DISTRICT

GFWC West County Women's Club, St. Louis

NINTH DISTRICT

GFWC Ste. Genevieve Woman's Club

District Outstanding Project**2nd Place Awards****FIRST DISTRICT**

GFWC Lathrop Study Club

SECOND DISTRICT

GFWC Kansas City Athenaeum

THIRD DISTRICT

GFWC Woman's Club of Hannibal

FOURTH DISTRICT

GFWC Tuesday Club of Columbia

SIXTH DISTRICT

GFWC Sorosis Club of Springfield

SEVENTH DISTRICT

GFWC Generation III, El Dorado Springs

EIGHTH DISTRICT

GFWC Uandi Literary Club, St. Louis

District Outstanding Project**3rd Place Awards****SECOND DISTRICT**

GFWC Platte City Study Club

FOURTH DISTRICT

GFWC Chautauqua Club, Clarksville

SIXTH DISTRICT

GFWC Marshfield Club

SEVENTH DISTRICT

GFWC Silver Leaf Benefit Club, Cassville

EIGHTH DISTRICT

GFWC Creve Coeur Women's Club

Honorable Mention Projects**SECOND DISTRICT**

GFWC Art and Literature Club, Parkville

GFWC Patrician Club, Parkville

FOURTH DISTRICT

GFWC Studere Club, Wellsville

Missouri Girls Town Support-Platinum**FIRST DISTRICT**

GFWC Chillicothe Culture Club

SECOND DISTRICT

GFWC Kansas City Athenaeum

GFWC Beverly Shelton Girls Town Club, Independence

GFWC Nu Era Study Club, Independence

GFWC Woman's Club of Lexington

GFWC Elvarea Fickle Girls Town Club, Kansas City

GFWC Patrician Club, Parkville

GFWC Heart of America Girls Town Club, Raytown

FOURTH DISTRICT

GFWC Tuesday Club of Columbia

GFWC Harmony Club of Middletown

GFWC Mexico Women's Club

GFWC Studere Club, Wellsville

FIFTH DISTRICT

GFWC Capital City Woman's Club, Jefferson City

SIXTH DISTRICT

GFWC Sorosis Club of Springfield

SEVENTH DISTRICT

GFWC Generation III Club,

El Dorado Springs

GFWC Women's Service League of Carthage

NINTH DISTRICT

GFWC Mina Sauk Club, Ironton

Missouri Girls Town Support – Gold**FIRST DISTRICT**

GFWC Tuesday Study Club of Braymer

SECOND DISTRICT

GFWC Platte City Study Club

SIXTH DISTRICT

GFWC Alton Culture Club

EIGHTH DISTRICT

GFWC Uandi Literary Club, St. Louis

Missouri Girls Town Support – Silver**THIRD DISTRICT**

GFWC Woman's Club of Hannibal

FOURTH DISTRICT

GFWC Chautauqua Club, Clarksville

FIFTH DISTRICT

GFWC Coterie Club, Marshall

SEVENTH DISTRICT

GFWC Progress Club, El Dorado Springs

NINTH DISTRICT

GFWC Monday Club, Farmington

GFWC Farmington Federated Women's Club

Missouri Girls Town Support – Bronze**FIRST DISTRICT**

GFWC Lathrop Study Club

SECOND DISTRICT

GFWC Fortnightly Study Club of Liberty

GFWC Grandview Study Club

THIRD DISTRICT

GFWC Woman's Club of Oakwood

FIFTH DISTRICT

GFWC Dianas Club of Jefferson City

GFWC Golden Study Club of Fayette

Missouri GT Support - \$100 or More**FIRST DISTRICT**

GFWC XIX Club of Chillicothe

GFWC Bethany 20th Century Club

GFWC Monday Club of Hamilton

GFWC Tri-Arts Girls Town Club, Cameron

SECOND DISTRICT

GFWC Achieving by Reading of Lee's Summit

GFWC Homemakers of Hickman Mills

THIRD DISTRICT

GFWC We Moderns Club of Lewistown

GFWC Lydian Club of Macon

GFWC Woman's Club of Shelbyville

FIFTH DISTRICT

GFWC Junior Achievers Club of Appleton City

GFWC Keystone Club of Windsor

GFWC Better Homes Club of Butler

SIXTH DISTRICT

GFWC Marshfield Club
 GFWC Crescite Club of Thayer
 GFWC Cabool Girls Town Study Club

SEVENTH DISTRICT

GFWC Laurels of Nevada
 GFWC Thalias of Nevada

EIGHTH DISTRICT

GFWC West County Women's Club
 GFWC Crestwood Women's Club
 GFWC Glendale Women's Club
 GFWC Creve Coeur Women's Club

NINTH DISTRICT

GFWC Women's Community Club of
 Gideon

**Districts with 100% of Clubs Reporting
 Missouri Girls Town Activities**

Districts three, seven and eight

OFFICIAL CALL ~ GFWC MISSISSIPPI VALLEY REGION ~ 38TH ANNUAL CONFERENCE

Nebraska City, Nebraska October 7-9, 2011

All GFWC members in the states of Iowa, Kansas, Minnesota, Nebraska, North Dakota, South Dakota and Missouri are called to the annual conference. Boosters are welcome. **Make room reservations at Lied Lodge and Conference Center, 2700 Sylvan Road, P.O. Box 817, Nebraska City, NE 68410 at 1-800-546-5433 or at 402-873-8733. Ask for GFWC Mississippi Valley Region Conference rates: \$124.00 plus tax for 2 double beds or king (single/double occupancy) or \$134.00 plus tax for triple/quadruple occupancy. Reserve by September 11, 2011.** Airport shuttle service: \$27.00 per person per trip to and from Eppley Airfield, Omaha. For shuttle details and to make reservations, contact the Lied Lodge. Mail one separate registration sheet for each person, including Boosters, attending a function **no later than September 11, 2011** - make copies as needed.

Registration checks payable to: MVR - GFWC Nebraska

Mail to: Janet Kuhl
 449 North Molley
 Bennington, NE 68007
 Phone: 402-238-2833
 Email: jkuhl12@cox.net

Name _____

Address: _____

Phone: _____

Email: _____

Position: _____

First Time Attendee? Yes _____ No _____

The Nebraska City Tour is Friday, October 7, 9:15 am - 3 pm seeing the Arbor Lodge, Kimmel Orchard and optional afternoon stops, includes shopping and buffet lunch.

Booster Tours on Saturday to be scheduled on your own

In place of having a "Day of Service" each attendee is asked to donate cash or bring Pull-ups, large diapers (size 4 and up), paper towels or feminine products for the Domestic Violence Program in Nebraska City.

Registration, Member	\$10.00	_____
Registration, Booster	5.00	_____
Tour - Nebraska City Sites (Choose afternoon tour options at check-in)	45.00	_____
Nebraska State Night Banquet	44.00	_____
Saturday Luncheon Continuous day-time break service	35.00	_____
Saturday Banquet	44.00	_____
Sunday Continental Breakfast	20.00	_____

Total Amount Enclosed _____

If you have any dietary restrictions or mobility concerns, please tell us when you register and we will make every effort to meet your special needs.

Please bring items for the General Store to help balance the MVR budget. Items may include handmade gifts, crafts, baked goods, jewelry, garden flags, candy, books, CD's, etc.

For complete details concerning the MVR Conference, please check the GFWC of MO website: gfwcmo.org.

*Due to limited space in this issue of The Letter, the "Angels Among Us" and the Club News cannot be featured. All news received prior to this issue will be in the next Missouri Clubwoman. My apologies for the inconvenience. **Karla***

GFWC of Missouri, Inc

THE LETTER

Karla Kincaid, Chairman
10396 SE State Route E
Braymer, Missouri 64624

Inside this Issue

	<i>Page</i>
<i>President's Letter</i>	<i>1</i>
<i>Officer Reports</i>	<i>2</i>
<i>Chairman Reports</i>	<i>4</i>
<i>Calendar</i>	<i>6</i>
<i>MO Girls Town</i>	<i>7</i>
<i>Scholarships</i>	<i>8</i>
<i>2010 State Awards</i>	<i>9</i>
<i>MVR Registration</i>	<i>13</i>
<i>Joplin Relief Project</i>	<i>14</i>

GFWC of Missouri Mission Statement:

*To be the pre-eminent women's organization
providing support to local, state, national and
global communities through volunteerism.*

Tornado Relief for Joplin

GFWC of Missouri, Inc. will be assisting the children of Joplin by participating in the Adopt-A-Classroom project. The purpose of this program is to help restock the classrooms and to provide the teachers with supplies they will need as they begin the upcoming school year. The Joplin School District lost three schools, had significant damage to five other schools and minor damage to two additional schools. GFWC of Missouri has been assigned a classroom and will help the teacher obtain the materials she lost in the tornado which struck the city on May 22, 2011.

We have been very fortunate to have GFWC members from other states send monetary donations as well as tangible items. **Aren't GFWC women just the best?**

If you or your clubs would like to donate to this project, it would be greatly appreciated. **Please make your tax deductible donations to GFWC of Missouri, Inc. Fund for Charity and Education.** Send your checks to Dorothy Getz; GFWC of Missouri, Inc. Treasurer; P.O. Box 1284; Lake Sherwood, Missouri 63357-1284.